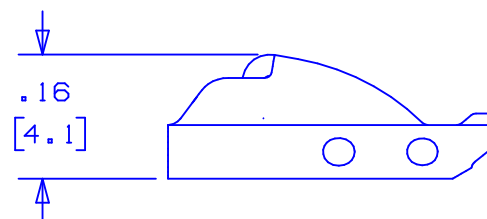
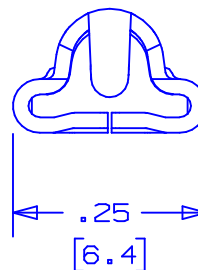
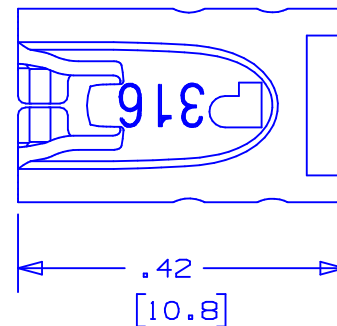


NOTES:

1. TO BE USED WITH PANDUIT STAINLESS STEEL BANDING MBS-MR316 & MBS-TLR316. (A)
2. APPLICATION TOOL: GS4MT, PPTMT, ST2MT, ST3MT, AND HTMT.
3. TOOL TENSION SETTING: 1 TO 4 (GS4MT & PPTMT TOOLS ONLY).
4. DIMENSIONS IN [ ] ARE MILLIMETERS.
5. MINIMUM LOOP TENSILE STRENGTH: 100 lbs. [ 445 N ].
6. TOLERANCES: .XXX = ±.010 [ .254 ]  
 .XX = ±.02 [ .508 ]  
 .X = ±.03 [ .762 ]  
 ANGLES = ±2°



CAD FILENAME/LAYERS S41146\_01

PANDUIT CORP. TINLEY PARK, ILLINOIS

METAL LOCKING TIE HEAD  
STANDARD PART #MTHS-C316

UNLESS OTHERWISE SPECIFIED,  
DIMENSIONAL TOLERANCES ARE:  
(.X) ± x      (.XXX) ± x  
(.XX) ± x      ANGLES ± x

UNLESS OTHERWISE SPECIFIED,  
ALL DIMENSIONS ARE GIVEN  
IN INCHES, THIRD ANGLE PROJECTION.

01	10/03	BRH	DPN	(A) ADDED ST3MT TO APPLICATION TOOL NOTE	11162	CCH	JJB	DRAWN BY JAMB	MAT'L:  316 STAINLESS STEEL	SCALE 4x	DRAWING NO. S41146	DWG SIZE A
00	8/03	JAMB	DPN	RELEASED	10938	CCH	JJB	DATE 8-12-03		CHK'D DPN		
REV	DATE	BY	CHK	DESCRIPTION	ECN #	PM	CUST					